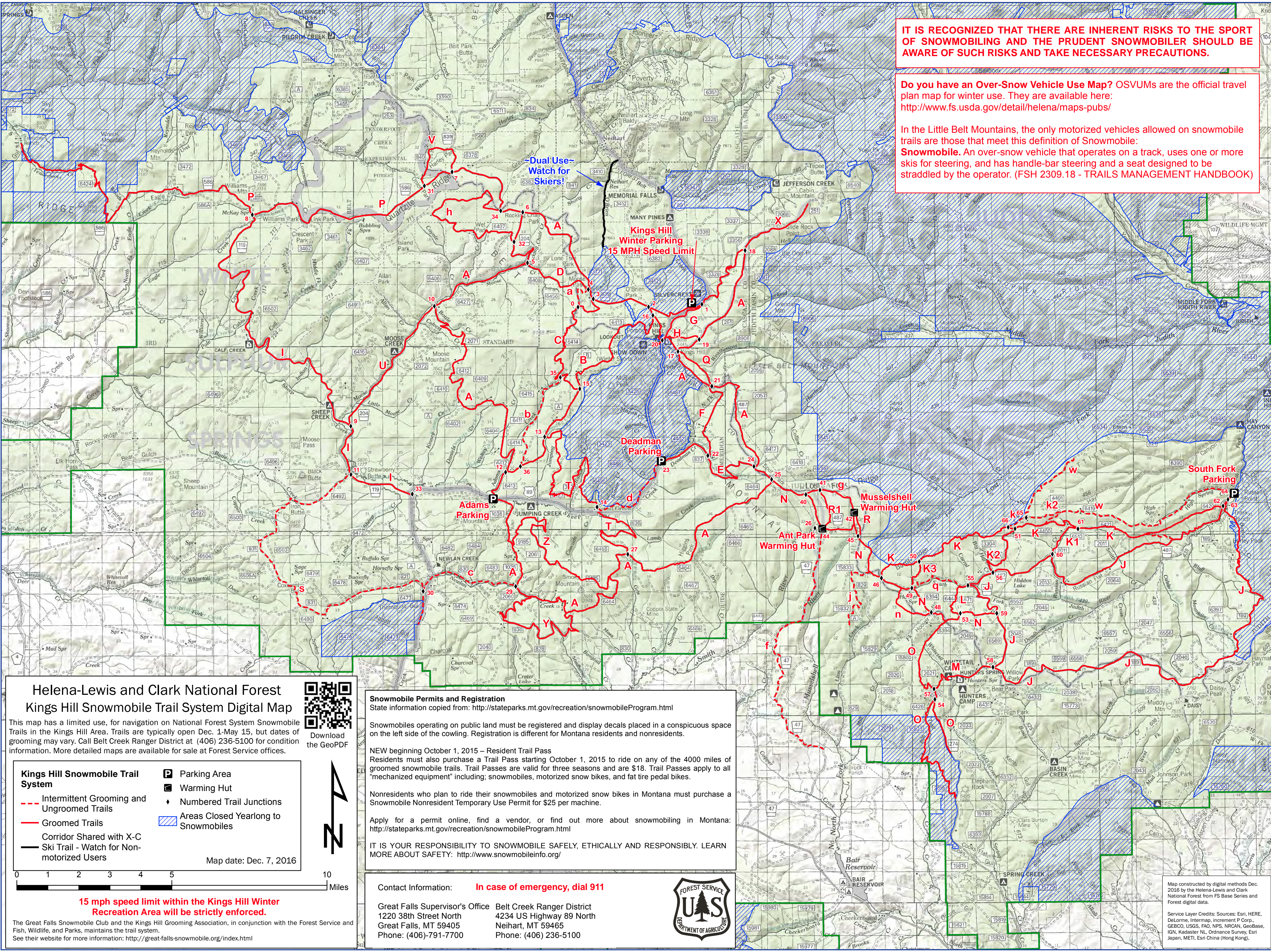


IT IS RECOGNIZED THAT THERE ARE INHERENT RISKS TO THE SPORT OF SNOWMOBILING AND THE PRUDENT SNOWMOBILER SHOULD BE AWARE OF SUCH RISKS AND TAKE NECESSARY PRECAUTIONS.

Do you have an Over-Snow Vehicle Use Map? OSVUMs are the official travel plan map for winter use. They are available here: <http://www.fs.usda.gov/detail/helena/maps-pubs/>

In the Little Belt Mountains, the only motorized vehicles allowed on snowmobile trails are those that meet this definition of Snowmobile: Snowmobile. An over-snow vehicle that operates on a track, uses one or more skis for steering, and has handle-bar steering and a seat designed to be straddled by the operator. (FSH 2309.18 - TRAILS MANAGEMENT HANDBOOK)



**Helena-Lewis and Clark National Forest
Kings Hill Snowmobile Trail System Digital Map**

This map has a limited use, for navigation on National Forest System Snowmobile Trails in the Kings Hill Area. Trails are typically open Dec. 1-May 15, but dates of grooming may vary. Call Belt Creek Ranger District at (406) 236-5100 for condition information. More detailed maps are available for sale at Forest Service offices.

| | |
|--|--------------------------------------|
| Kings Hill Snowmobile Trail System | Parking Area |
| Intermittent Grooming and Ungroomed Trails | Warming Hut |
| Groomed Trails | Numbered Trail Junctions |
| Corridor Shared with X-C Ski Trail - Watch for Non-motorized Users | Areas Closed Yearlong to Snowmobiles |

Map date: Dec. 7, 2016

0 1 2 3 4 5 10 Miles

15 mph speed limit within the Kings Hill Winter Recreation Area will be strictly enforced.

The Great Falls Snowmobile Club and the Kings Hill Grooming Association, in conjunction with the Forest Service and Fish, Wildlife, and Parks, maintains the trail system. See their website for more information: <http://great-falls-snowmobile.org/index.html>



Snowmobile Permits and Registration
State information copied from: <http://stateparks.mt.gov/recreation/snowmobileProgram.html>

Snowmobiles operating on public land must be registered and display decals placed in a conspicuous space on the left side of the cowling. Registration is different for Montana residents and nonresidents.

NEW beginning October 1, 2015 – Resident Trail Pass
Residents must also purchase a Trail Pass starting October 1, 2015 to ride on any of the 4000 miles of groomed snowmobile trails. Trail Passes are valid for three seasons and are \$18. Trail Passes apply to all "mechanized equipment" including; snowmobiles, motorized snow bikes, and fat tire pedal bikes.

Nonresidents who plan to ride their snowmobiles and motorized snow bikes in Montana must purchase a Snowmobile Nonresident Temporary Use Permit for \$25 per machine.

Apply for a permit online, find a vendor, or find out more about snowmobiling in Montana: <http://stateparks.mt.gov/recreation/snowmobileProgram.html>

IT IS YOUR RESPONSIBILITY TO SNOWMOBILE SAFELY, ETHICALLY AND RESPONSIBLY. LEARN MORE ABOUT SAFETY: <http://www.snowmobileinfo.org/>

Contact Information: **In case of emergency, dial 911**

| | |
|---|--|
| Great Falls Supervisor's Office 1220 38th Street North Great Falls, MT 59405 Phone: (406)-791-7700 | Belt Creek Ranger District 4234 US Highway 89 North Neihart, MT 59465 Phone: (406) 236-5100 |
|---|--|

Map constructed by digital methods Dec. 2016 by the Helena-Lewis and Clark National Forest from FS Base Series and Forest digital data.

Service Layer Credits: Sources: Esri, HERE, DeLorme, Intermap, increment P Corp., GEBCO, USGS, FAO, NPS, NRCAN, GeoBase, IGN, Kadaster NL, Ordnance Survey, Esri Japan, METI, Esri China (Hong Kong).